



Windrush Close | Walsall | WS3 4LJ

£850 PCM

 **Webbs**
estate agents

Summary

Webbs Estate Agents are delighted to bring to market this spacious and well presented first floor apartment, situated on a popular residential development in the sought after village of Pelsall.

In brief, the accommodation comprises of; communal hallway with secure intercom entry system, reception hallway to apartment, spacious open plan lounge/kitchen/dining area, two double bedrooms and bathroom. With two allocated parking spaces.

Unfortunately, pets and smokers will not be considered.

Key Features

Rooms and Dimensions

PROPERTY DETAILS:

Please Note

Hallway

Lounge Area

16'4" x 12'2" (5m x 3.71m)

Kitchen Area

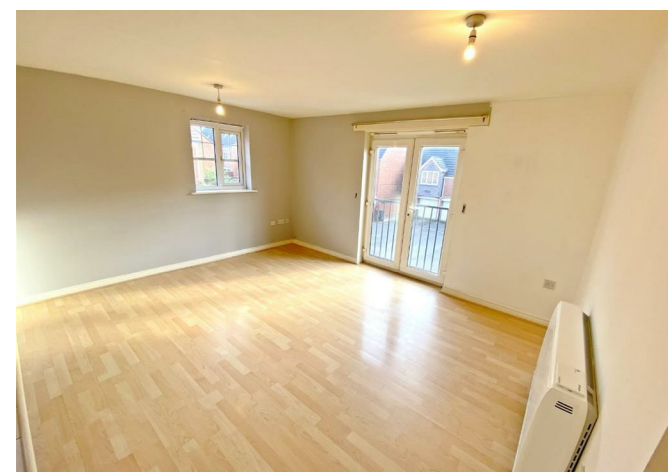
14'5" x 5'3" (4.4m x 1.61m)

Bedroom

11'10" x 8'5" (3.61m x 2.57m)

Bedroom

14'5" x 8'3" (4.41m x 2.54m)





Ground Floor



Webbs Estate Agents - endeavour to maintain accurate depictions of properties in Virtual Tours, Floor Plans and descriptions, however, these are intended only as a guide and purchasers must satisfy themselves by personal inspection.

